



National
Qualifications
2025

X835/77/11

Graphic Communication Supplementary sheets

WEDNESDAY, 30 APRIL

1:00 PM – 3:30 PM

Supplementary sheet 1 for use with question 1, supplementary sheets 2 and 3 for use with question 3 and supplementary sheet 4 for use with question 5.



* X 8 3 5 7 7 1 1 *

[BLANK PAGE]

DO NOT WRITE ON THIS PAGE

REGISTER / LOGIN

CUSTOMER SUPPORT

CYCLECTRIC

ROAD

GRAVEL

COMMUTER

MOUNTAIN

CROSS

FIND OUT MORE

OUR APPROACH TO SUSTAINABILITY

OUR TECHNOLOGY

OUR ACCESSORY RANGE

FLEXIBLE WAYS TO PAY

With several flexible ways to pay, you can choose to pay for your dream ride outright or spread the payments into small, manageable instalments for added convenience.

30 DAY TEST RIDE

Enjoy the added reassurance of a test ride. Because we want you to be 100% happy with your purchase, you can ride your bike and return it for a refund or any changes to be made, within 30-days. Terms and conditions apply.

IN-STORE AND ONLINE

Take advantage of our industry leading BikeBuilder customisation or visit us in-store. From choosing the right bike, sizing assistance and advice, our passionate team of bike experts are here to help.

BIKE BUILDER CUSTOMISATION

ROAD BIKE

360°

Small

5' 5" - 5' 7"

165 - 170cm

SELECT

Medium

5' 7" - 5' 10"

170 - 178cm

SELECT

Large

5' 10" - 6' 1"

178 - 185cm

SELECT

Frame Colour

Cyan d'Azur Flip

Voodoo Bronze Flip

Reflex Green Flip

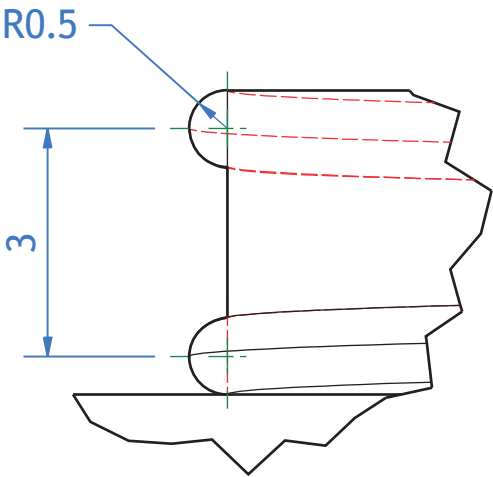
Reflex Blue Flip

3D INTERACTIVE VIEW

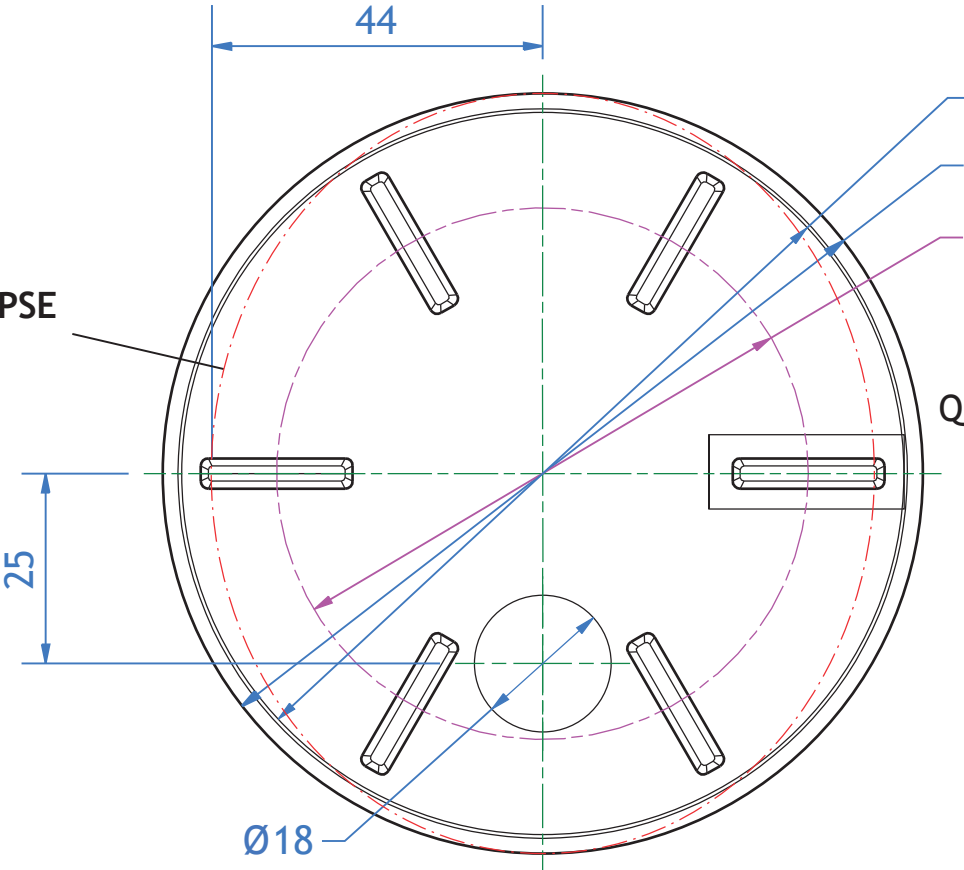
page 03

COMPONENT A

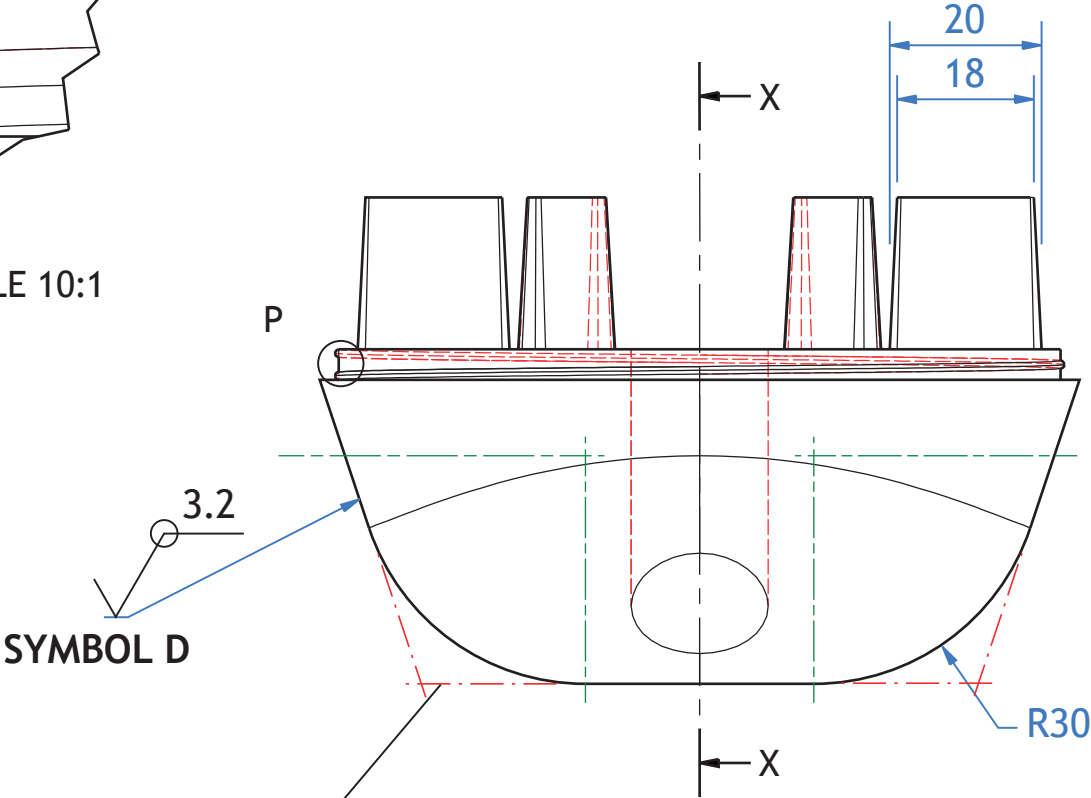
POSITION of ELLIPSE
PROFILE SKETCH



ENLARGED VIEW P SCALE 10:1



PLAN

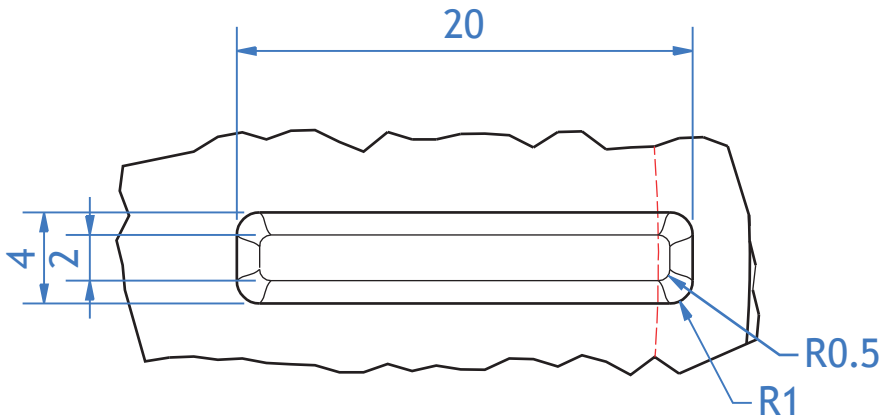


ELEVATION

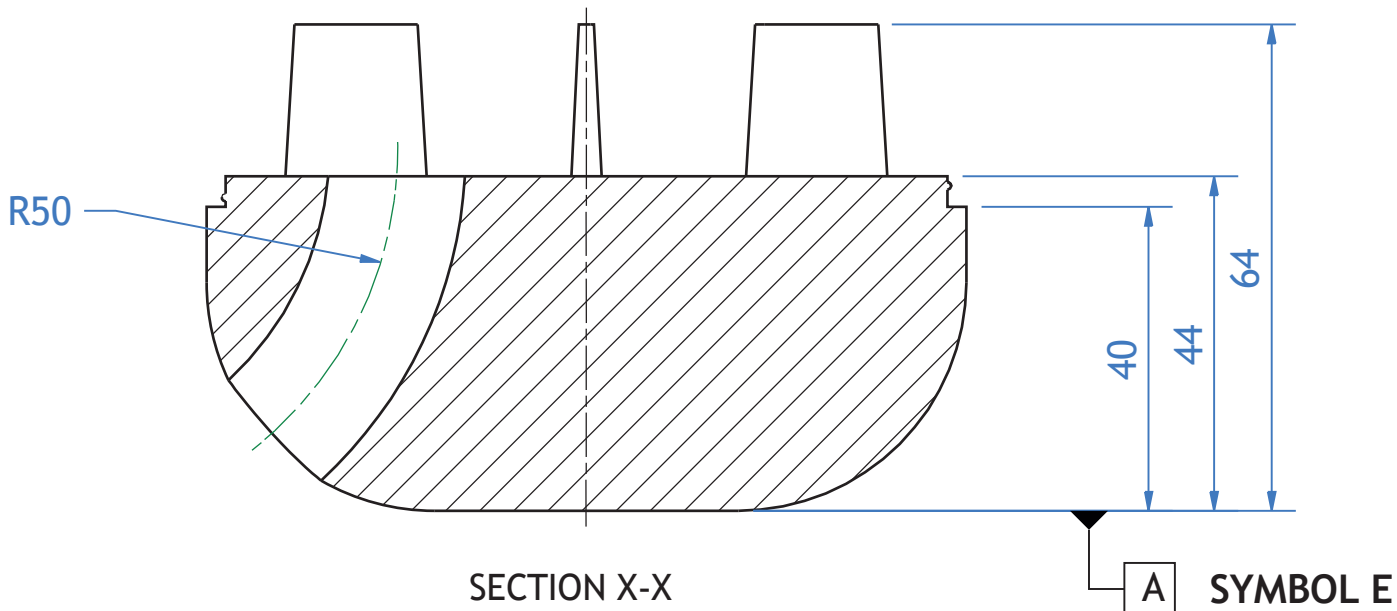
3.2
SYMBOL D

POSITION of ELLIPSE
PROFILE SKETCH


TOLERANCE G

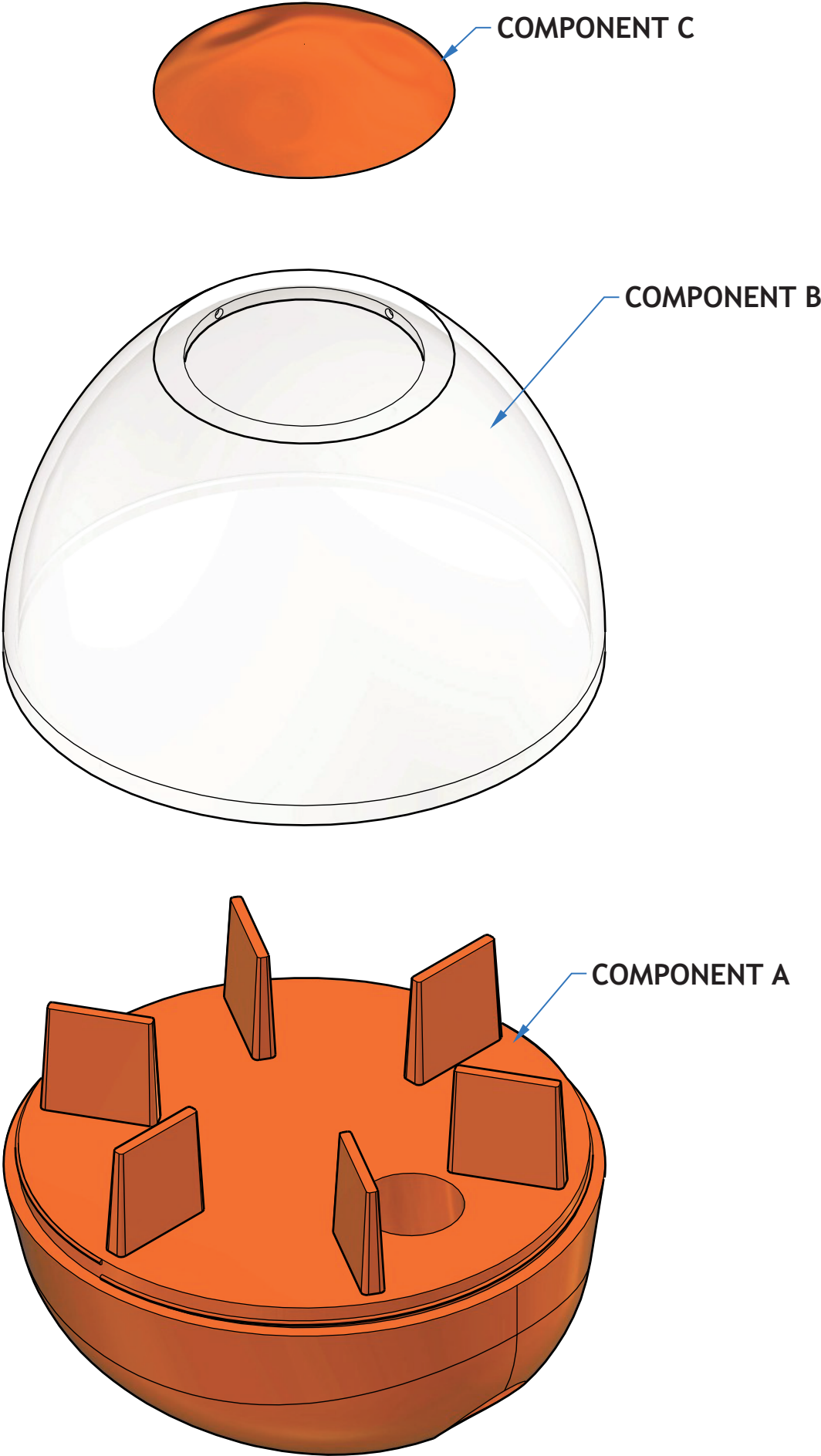


ENLARGED VIEW Q SCALE 3:1 (CENTRE LINES REMOVED FOR CLARITY)



TOLERANCE F

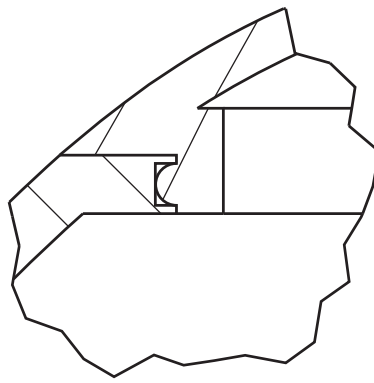
TITLE: DOG TREAT TOY	
DRAWING NUMBER: 1	
ALL DIMENSIONS IN MM TOLERANCE ± 0.2 UNLESS OTHERWISE STATED	SCALE: 1:1
AUTHOR: A.NON	DATE: 10/10/23



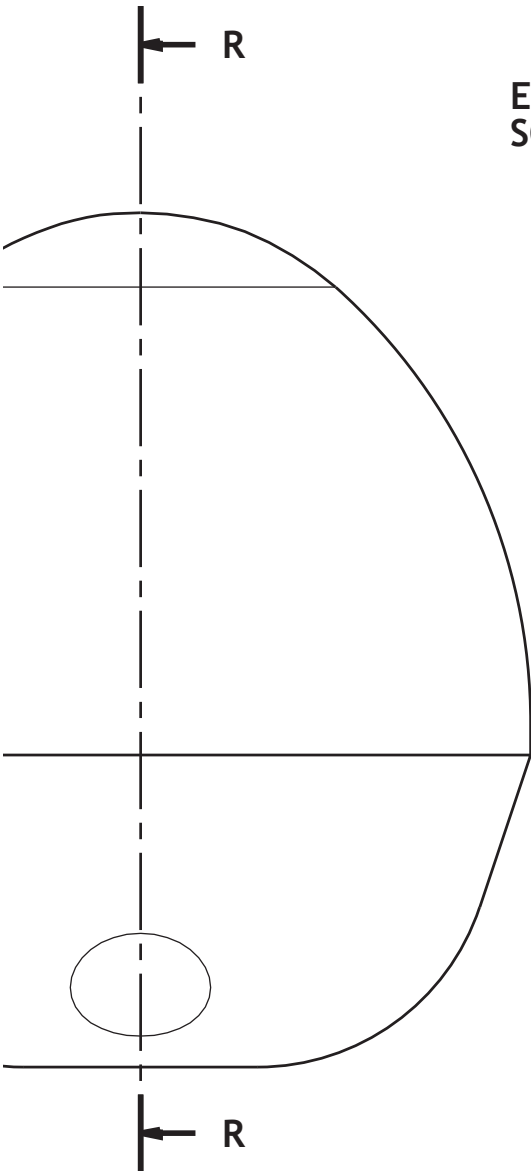
EXPLODED

ASSEMBLED

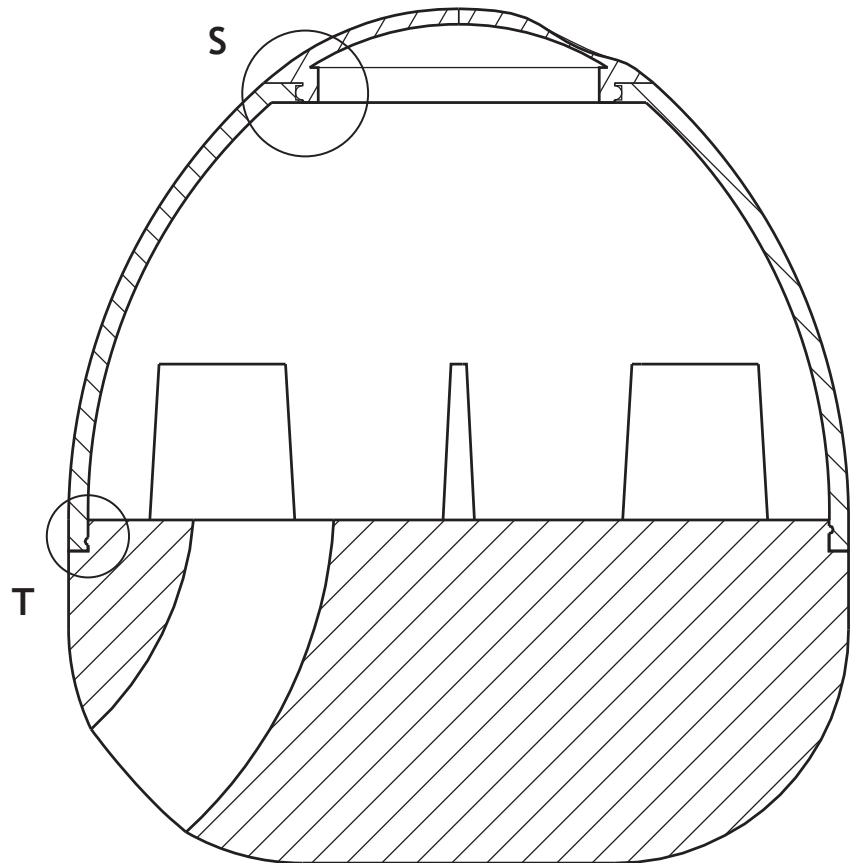
CENTRE LINES HAVE BEEN
REMOVED FOR CLARITY



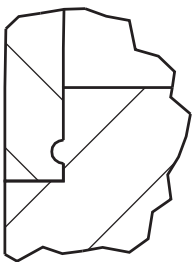
ENLARGED VIEW S
SCALE 4:1



ELEVATION



SECTION R-R



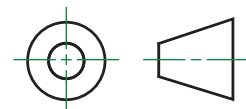
ENLARGED VIEW T
SCALE 4:1

TITLE: DOG TREAT TOY

DRAWING NUMBER: 2

EXPLODED AND
ORTHOGRAPHIC VIEWS

AUTHOR: A.NON

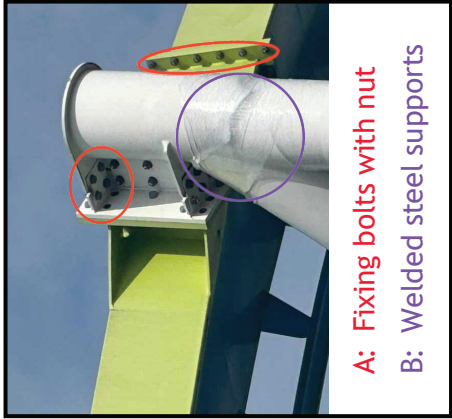


SCALE: 1:1

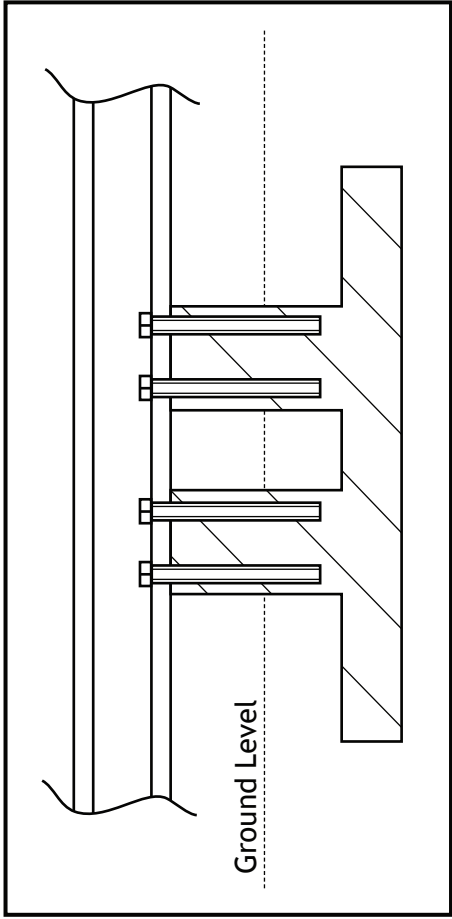
DATE: 10/10/23

Specification		
• Track length: 425 m	• Track material: Steel	
• Footprint: 66×40 m approx	• Foundation material: Concrete	
• Height: 20.1 m	• Foundation connected to supports using fixing bolts	
• First loop height: 20 m	• Frame, supports and tracks assembled using bolts and welding	
• Second loop height: 15.4 m		
	• Number of trains: 1 with 6 cars, 4 seats each	

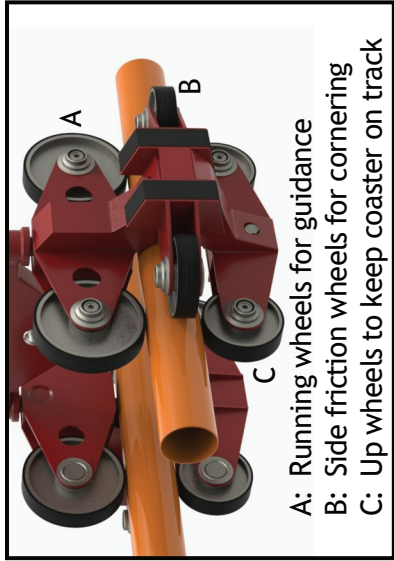
Joining Methods



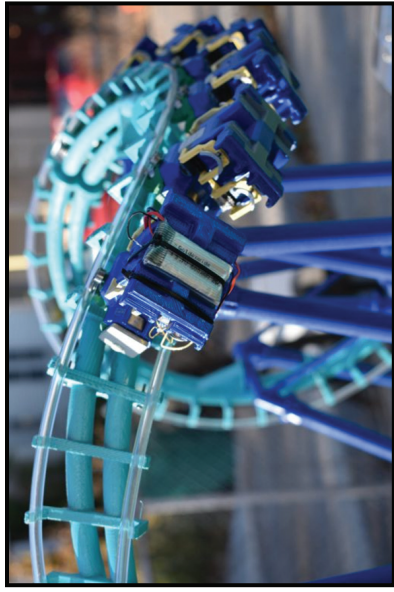
Column Foundation (Not to BS8888)



Mechanical wheel and brake system



3D Printed model



[BLANK PAGE]

DO NOT WRITE ON THIS PAGE

[BLANK PAGE]

DO NOT WRITE ON THIS PAGE

[BLANK PAGE]

DO NOT WRITE ON THIS PAGE

[BLANK PAGE]

DO NOT WRITE ON THIS PAGE

Acknowledgement of copyright

Supplementary sheet 1 Pay icon: <https://pixabay.com/vectors/money-wallet-bank-banknote-bill-3722123/>
Location icon: <https://pixabay.com/vectors/location-position-job-you-are-here-1132648/>

Test icon: <https://pixabay.com/vectors/checkmark-tick-check-yes-mark-303752/>

Home icon: <https://pixabay.com/vectors/house-icon-home-symbol-sign-308936/>

Bike helmet: <https://pixabay.com/photos/bicycle-helmet-helmet-bike-helmet-505399/>

Supplementary sheet 4 Joining methods: Image is taken from Davide Mavillonio on LinkedIn, https://www.linkedin.com/posts/davide-mavillonio_fem-cfd-ansys-ugcPost-7082302878328995840-Wn4t/

SQA has made every effort to trace the owners of copyright of this item and seek permissions. We are happy to discuss permission requirements and incorporate any missing acknowledgement. Please contact question.papers@sqa.org.uk.

Column foundation photo: Image is taken from <https://clarkreder.com/entertainment/projects/amusement/mystic-timbers-roller-coaster-foundations>

SQA has made every effort to trace the owners of copyright of this item and seek permissions. We are happy to discuss permission requirements and incorporate any missing acknowledgement. Please contact question.papers@sqa.org.uk.

Mechanical wheel and brake system: Image is taken from <https://free3d.com/3d-model/roller-coasterwheel-884.html>

SQA has made every effort to trace the owners of copyright of this item and seek permissions. We are happy to discuss permission requirements and incorporate any missing acknowledgement. Please contact question.papers@sqa.org.uk.

3D printed model: Image is taken from 3D Printed Working Roller Coaster Model | MatterHackers

SQA has made every effort to trace the owners of copyright of this item and seek permissions. We are happy to discuss permission requirements and incorporate any missing acknowledgement. Please contact question.papers@sqa.org.uk.

Rollercoaster in motion model: Image is taken from See a Functional 3D-Printed Roller Coaster at SOLIDWORKS World 2019 | MySolidWorks

SQA has made every effort to trace the owners of copyright of this item and seek permissions. We are happy to discuss permission requirements and incorporate any missing acknowledgement. Please contact question.papers@sqa.org.uk.